

This project has received funding from the European Union's Horizon 2020 research and innovation programme (ISIB-2015-1 programme) under grant agreement N° 696367

Data Driven Dairy Decisions for Farmers

IRTA^R

Instituto
de Investigación y Tecnología
Agroalimentarias

Aida Xercavins Simó

(aida.xercavins@irta.cat)

Programa de Bienestar Animal



¿Qué es el proyecto 4D4F?



Es una **RED TEMÁTICA** para intercambiar conocimientos y mejorar la toma de decisiones basándose en la información generada por los sensores que se usan en las granjas

¿Qué es el proyecto 4D4F?





Proyecto 4D4F



<http://4d4f.eu/>

2016 – 2019 fase activa

Actualmente fase pasiva

¿Cualquier tecnología?

No, sólo aquellas que nos dan

INFORMACIÓN





¿Porqué usar nuevas tecnologías?

“Si no medimos, no controlamos.

Si no controlamos, no conocemos.

Si no conocemos, no podemos tomar decisiones:
es decir, no podemos gestionar.”

¿Porqué usar nuevas tecnologías?

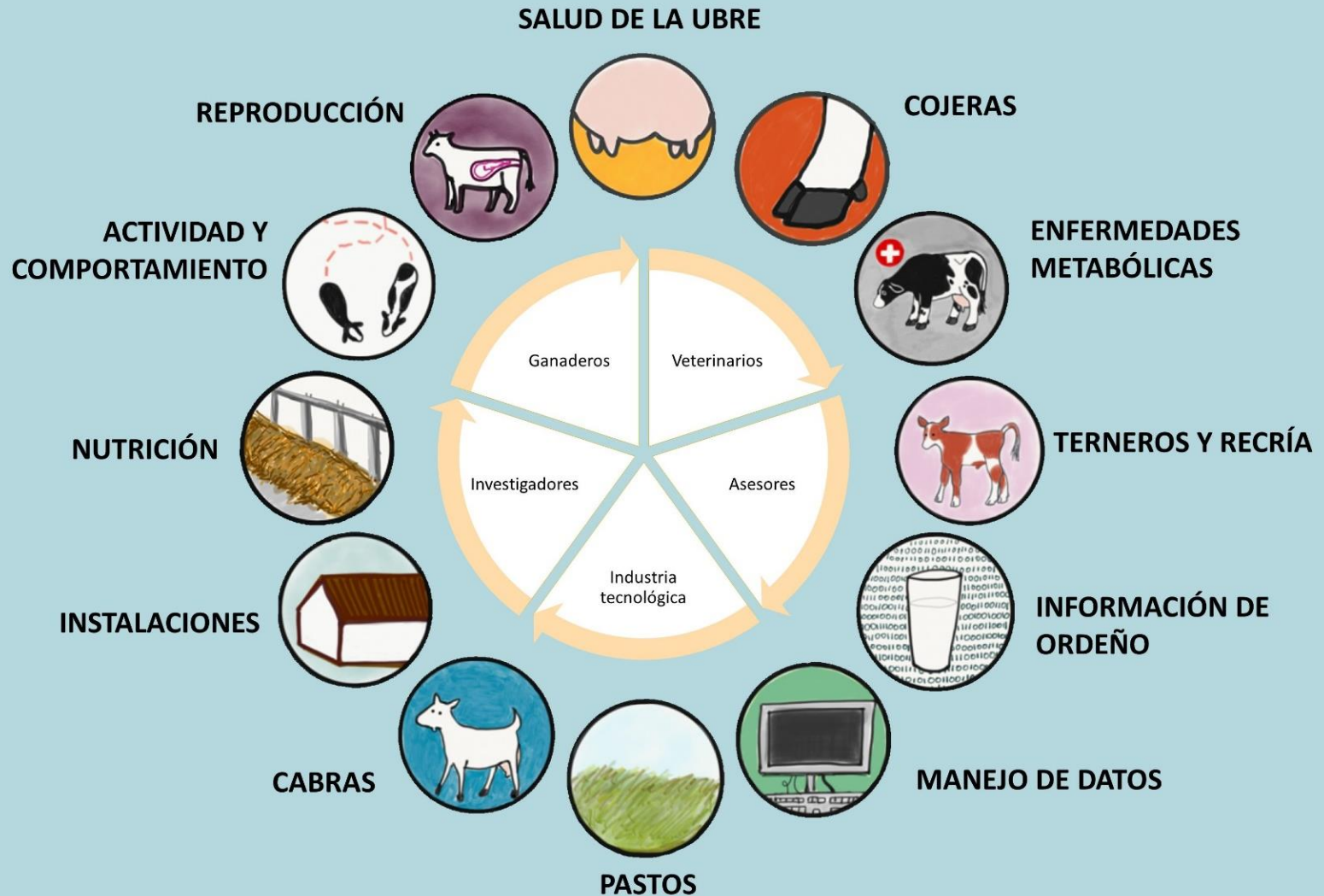


Hacer una gestión de los animales basada en el control continuo, automático y en tiempo real de la producción, la salud y el bienestar de los animales.

Limitaciones: inversión + adaptación al cambio



Cómo se organiza 4D4F:





Data Driven Dairy Decisions for Farmers

Información disponible:

DATA DRIVEN DAIRY DECISIONS FOR FARMERS

HOME PROJECT TECHNOLOGY WARI

INTEREST GROUPS PUBLICATIONS

LENDAR MEDIA FORUM LOG IN

FEATURED VIDEO

4D4F Final Video

WHY JOIN 4D4F?

- Get up-to-date & independent information
- Free access to learning tools
- Receive the monthly newsletter
- Participate in workshops & (virtual) events
- Participate in online polls
- Connect with like-minded people

Data to evaluate cow comfort

Author: Kristine Picart (LVO) - Date: April 30, 2019

Animal welfare is a growing concern for consumers, who often associate the increasing herd sizes per farm with a negative impact on animal welfare.

ISIP for Cow Comfort

UDDER HEALTH

LAMENESS

NUTRITION

REPRODUCTION

DATA MGMT

MILKING

ACTIVITY

METABOLIC DISEASES

YOUNGSTOCK

GOATS

GRASS

HOUSING

Select Your Language

FOLLOW US

RECENT TWEETS

4D4F - Data Driven Dairy Decisions For Farmers Retweeted

Tomas Klingström @Klingström

I've put up this chart from @4d4fproject as a wall decoration in my office to remind myself of differences in priorities between different stakeholders.

(source: 4d4f.eu/sites/default/...)

Horizon 2020 European Union Funding For Research & Innovation H2020-ISB-2015-1 / 696367 / 4D4F Data Driven Dairy Decisions for Farmers

1a. Farmers

1b. Researchers

1c. Veterinarians

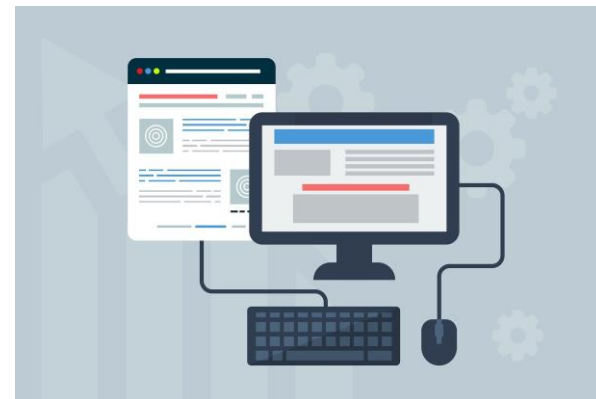
1d. Advisor Rankings



This project has received funding from the European Union's Horizon 2020 research and innovation programme (ISB-2015-1 programme) under grant agreement N° 696367

Para cada área de interés:

- Introducción
- Vídeos
- Infografías 
- Guía de buenas prácticas 
- Protocolos Normalizados de Trabajo (PNT)



Ejemplo infografía:



**¿DÓNDE ESTÁN MIS VACAS?
¿QUÉ ESTÁN HACIENDO?**

¡NO ES FÁCIL
MONITORIZAR A TODOS
LOS ANIMALES!

GRANDES GRUPOS
VACAS PASTANDO
FALTA DE TIEMPO



SENSORES

Los sensores proporcionan una información útil sobre la actividad y el comportamiento, para mejorar la salud y el bienestar.



LOCALIZACIÓN RÁPIDA



MUCHA INFORMACIÓN



INSIGHTS Y ANALÍTICAS

Actividad diaria óptima



Superposición con el tiempo social y el tiempo de descanso.



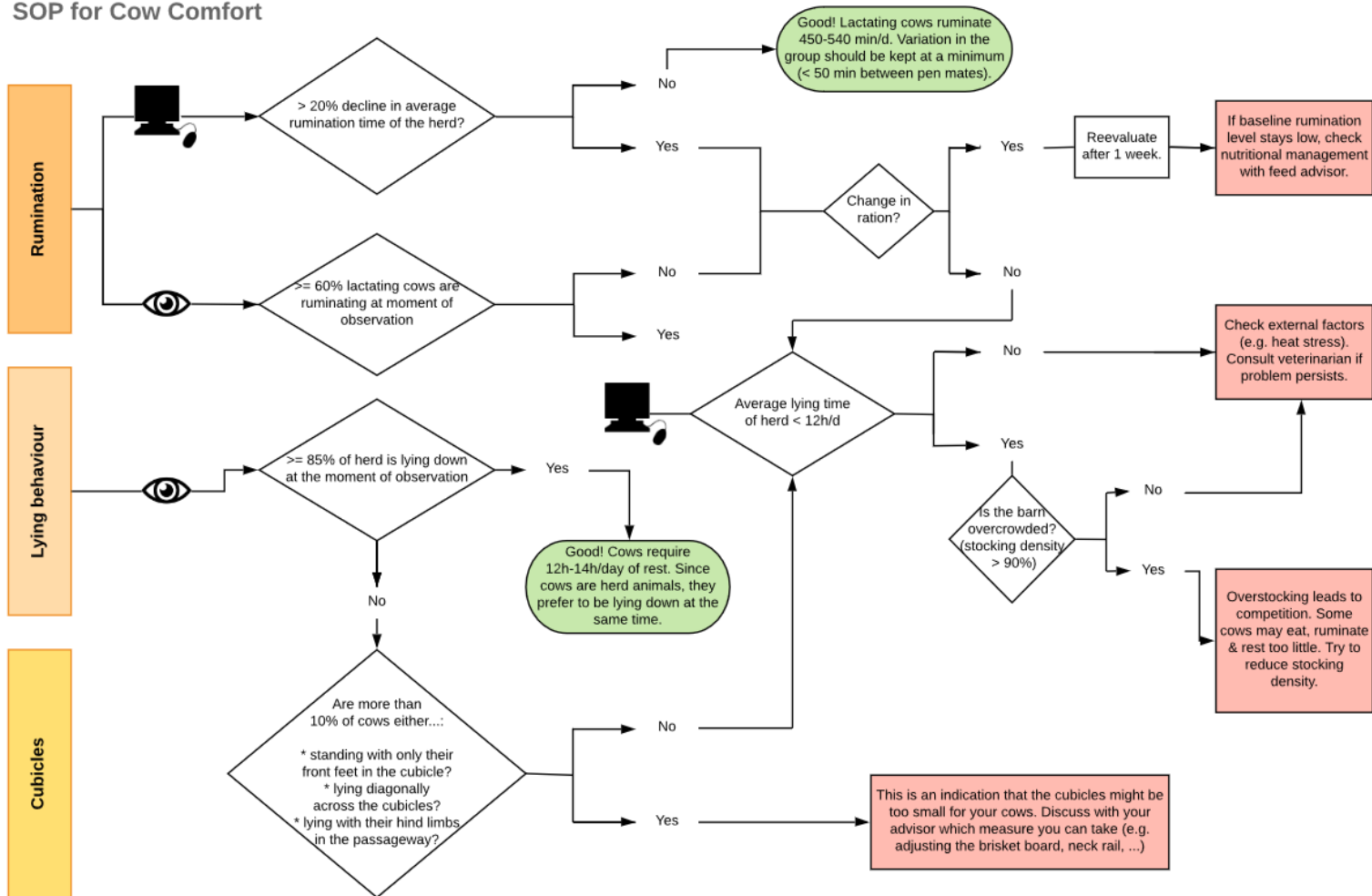
Los cambios en estos tiempos respecto al histórico en cada actividad afectan la producción lechera, a la salud y el bienestar animal.

¡Son señales de advertencia que usted puede usar para reaccionar rápidamente!

Ejemplo PNT:



SOP for Cow Comfort





Data Driven Dairy Decisions for Farmers

DATA DRIVEN DAIRY DECISIONS FOR FARMERS

HOME PROJECTS PUBLICATIONS CALENDAR TERHOUSE MEDIA FORUM LOG IN

Data Driven Dairy D

CONSUMER FEEDBACK REPORT

DAIRY SENSOR RESEARCH

INDUSTRY INNOVATIONS REPORT

REPORT FOR RESEARCHERS

STANDARD OPERATING

PROCEDURES

log in

FOLLOW US



RECENT TWEETS

4D4F @4d4fproject Three questions on heat detection #4D4F #Article 4d4f.eu/content/three... Apr 21, 2018

4D4F @4d4fproject Three questions on heat detection #4D4F #Article 4d4f.eu/content/three... Apr 21, 2018



Apr 21, 2018

4D4F @4d4fproject Protocols: no exact science but a continuous improvement process #4D4F #Article 4d4f.eu/content/protoc... Apr 19, 2018

FEATURED VIDEO

Dairy Farming: The Future of Bi...



2:51

WHY JOIN 4D4F?



- Get up-to-date & independent information
- Free access to learning tools
- Receive the monthly newsletter
- Participate in workshops & (virtual) events
- Participate in online polls
- Connect with like-minded people

EVAM experimental farm in Spain

Authors: Marta Temé, Aranzazu Varvaró, Aida Xercavins (IRTA) - April 23, 2018

IRTA (Institute of Agrifood Research and Technology) has recently transformed a conventional dairy cow farm to an avant-garde experimental farm with innovative sensors and technologies. The project is called "EVAM" (by its initials in Catalan), and started in 2017.



Selective dry cow treatment: which cow to treat?

Author: Kristine Piccart (ILVO) - April 16, 2018 - Original sources: AHDB, Eurodairy

Blanket dry cow therapy, meaning all cows receive an infusion of antimicrobials in their 4 quarters at dry off, has been standard practice for years. However, with growing concerns for antimicrobial resistance, more farms are shifting towards selective dry cow therapy. This means you are only going to treat the animals that are suspected of having an infection. But how do you select the cows that should get antimicrobials? Having good records of clinical mastitis cases and somatic cell counts is the foundation, according to this AHDB video.

Euro Dairy DRY COW Ther...

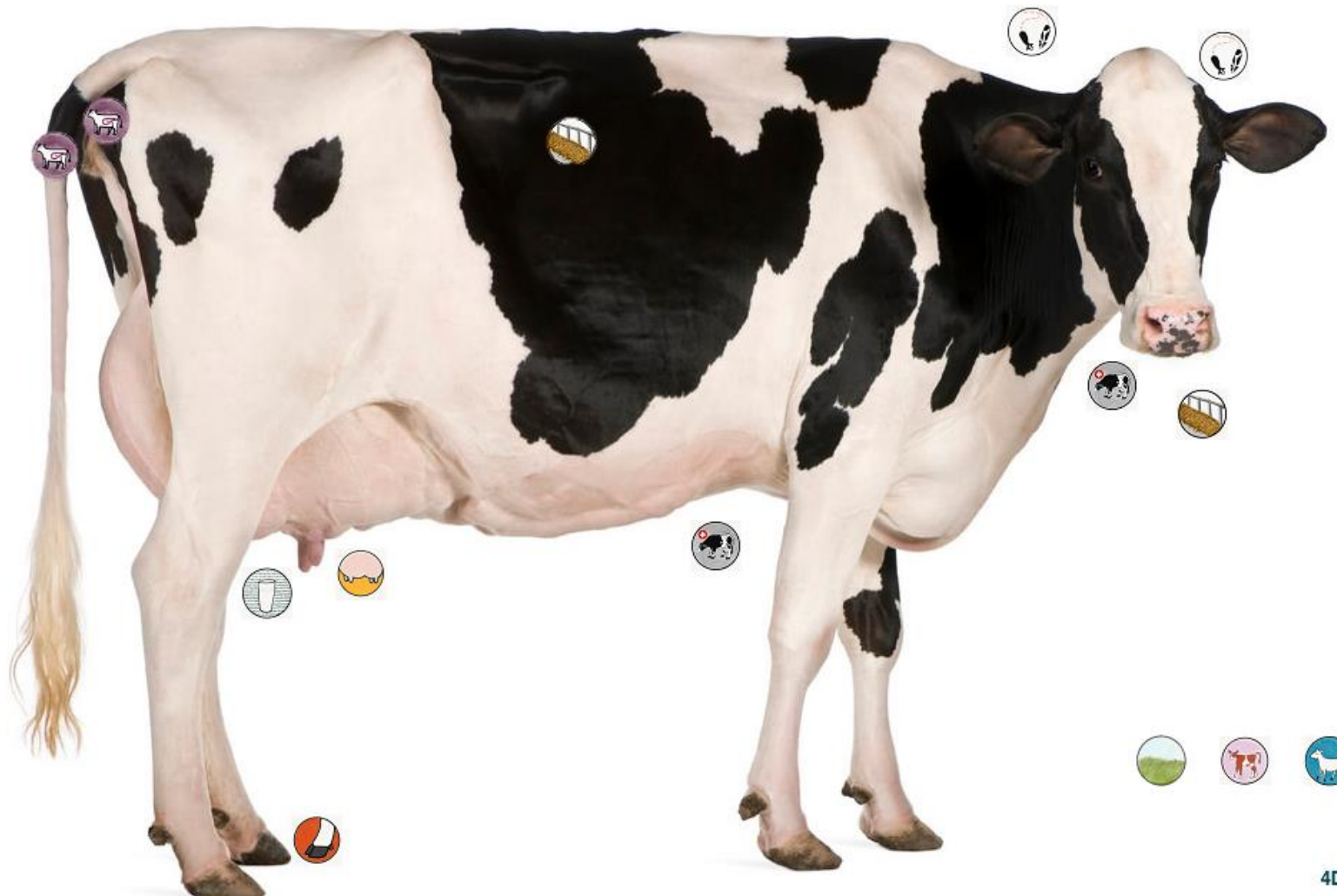
Grazing season has started in the Netherlands!

Author: Tamara Wind (VHL) - April 13, 2018





Warehouse of technologies





Warehouse of technologies

Rumination sensors

▸ Why measure rumination activity & feeding time?

▸ How to measure rumination & feeding time?

▸ Videos & case studies

▸ Additional information

	▲ Dealer	◆ Manufacturer	◆ Placement	◆ Battery life	◆ Range antenna
Cow Scout	GEA	Nedap	neck	< 10 years	< 1000m
CowManager	Agis	Agis	Ear	< 10 years	1000m

Link al almacén interactivo: [aquí](#)

Opción Excel: [aquí](#)



Data Driven Dairy Decisions for Farmers

DATA DRIVEN DAIRY DECISIONS FOR FARMERS

HOME PROJECT PUBLICATIONS CALENDAR TECHNOLOGY WAREHOUSE MEDIA FORUM LOG IN

FEATURED VIDEO

Dairy Farming: The Future of Bi...



WHY JOIN 4D4F?



- Get up-to-date & independent information
- Free access to learning tools
- Receive the monthly newsletter
- Participate in workshops & (virtual) events
- Participate in online polls
- Connect with like-minded people

Data Driven Dairy Decision For Farmers (4D4F) aims at developing a network for dairy farmers, dairy technology suppliers, data companies, dairy advisors, veterinarians and researchers to improve the decision making on dairy farms based on data generated by sensors.

To access the 4F4F content, log in or register below.

Register

Log in

FOLLOW US



RECENT TWEETS

4D4F @4d4fproject
Three questions on heat detection #4D4F #Article 4d4f.eu/content/three-...
Apr 21, 2018

4D4F @4d4fproject
Three questions on heat detection #4D4F #Article 4d4f.eu/content/three-...
Apr 21, 2018



Apr 21, 2018

4D4F @4d4fproject
Protocols: no exact science but a continuous improvement process #4D4F #Article 4d4f.eu/content/protoc...
Apr 19, 2018

EVAM experimental farm in Spain

Authors: Marta Temé, Aranzazu Varvaró, Aida Xercavins (IRTA) - April 23, 2018

IRTA (Institute of Agrifood Research and Technology) has recently transformed a conventional dairy cow farm to an avant-garde experimental farm with innovative sensors and technologies. The project is called "EVAM" (by its initials in Catalan), and started in 2017.



Selective dry cow treatment: which cow to treat?

Author: Kristine Piccart (ILVO) - April 16, 2018 - Original sources: AHDB, Eurodairy

Blanket dry cow therapy, meaning all cows receive an infusion of antimicrobials in their 4 quarters at dry off, has been standard practice for years. However, with growing concerns for antimicrobial resistance, more farms are shifting towards selective dry cow therapy. This means you are only going to treat the animals that are suspected of having an infection. But how do you select the cows that should get antimicrobials? Having good records of clinical mastitis cases and somatic cell counts is the foundation, according to this AHDB video.

Euro Dairy DRY COW Ther...

Grazing season has started in the Netherlands!

Author: Tamara Wind (VHL) - April 13, 2018





Sin olvidar que...

“La calidad de una decisión depende directamente de la calidad de la información utilizada para tomarla”

No todas las tecnologías encajan igual

Explotar el potencial de lo que ya tenemos

Contrastar la información y valorar la propia experiencia



Data Driven Dairy Decisions for Farmers

¡Muchas gracias por vuestra atención!

IRTA^R

Instituto
de Investigación y Tecnología
Agroalimentarias

aida.xercavins@irta.es

Telf. 972630236
extensión 1493

